

## Info-Tower Dual L mobile stand system

**Item no.: 1572**

The Info-Tower Dual L is a mobile stand system for two screens „side-by-side“ with a size between 40 and 55" / 102 - 140 cm.

The black high-gloss surface is the highlight that can be easily implemented in any environment.

The stable castors are concealed in the base of the Info-Tower and, if necessary, enable the entire stand system to be moved easily.

The column cover on the back is removable and allows easy access to the cabling, which finds enough space inside the column.

The VESA universal mount PLW 175 is already included and can be used up to VESA 600 x 400 mm max.. The VESA mount is also optionally lockable.

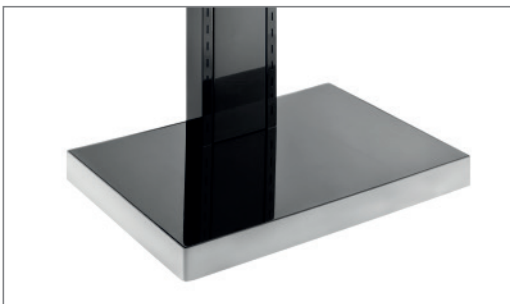
The TV mount can be securely hung in different heights and also has a hang out protection.

The maximum load of the stand system is 2x 35 kg.

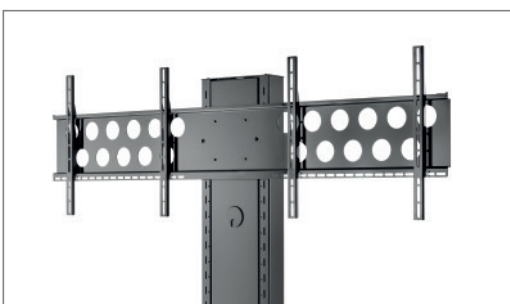
Thanks to a wide range of optional additional items, the system can also be easily adapted to special, individual requirements.



Expandable with accessories



concealed castors, high-gloss surface



incl. VESA universal mount PLW 175



## Info-Tower Dual L mobile stand system

Item no.: 1572

- for 2 screens „side-by-side“ from 40 - 55" / 102 - 140 cm
- installation in portrait or landscape format possible (depending on screen)
- incl. VESA universal mount up to VESA 600 x 400 mm max.
- incl. hang out protection
- screen height selectable in detents in 50-mm steps (tool needed)
- removable tower cover
- invisibly mounted set of castors
- 2x 35 kg load, max.
- floor space required: W 1000 x D 700 mm
- Height: 450 mm min. - 1830 mm max.
- Expandable with accessories

